

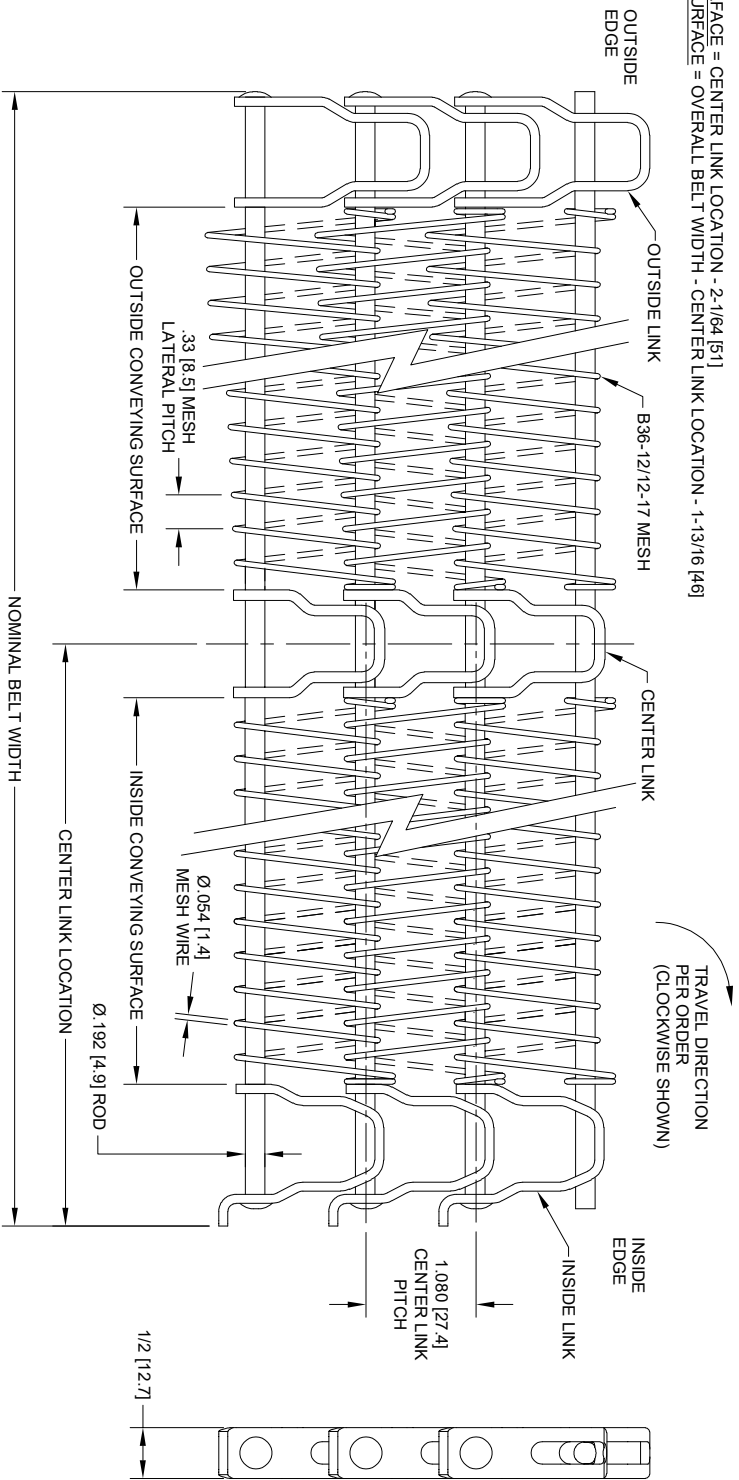
DWG NO.  
SRPDG100-B36-12-12-17

SH REV  
1 A

REVISION HISTORY

REV	DESCRIPTION	DATE
A	INITIAL RELEASE	

- NOTES:
1. BELT WIDTH PER ORDER
  2. CENTER LINK LOCATION AT CENTERLINE OF BELT
  3. MATERIAL: PER ORDER
  4. TURN DIRECTION PER ORDER (CLOCKWISE SHOWN)
  5. CONVEYING SURFACE:
    - INSIDE CONVEYING SURFACE = CENTER LINK LOCATION - 2-1/64 [51]
    - OUTSIDE CONVEYING SURFACE = OVERALL BELT WIDTH - CENTER LINK LOCATION - 1-13/16 [46]



THIS DRAWING CONTAINS CONFIDENTIAL INFORMATION AND TRADE SECRETS OF ASHWORTH BROS., INC. IT MAY NOT BE REPRODUCED IN WHOLE OR IN PART OR USED FOR THE BENEFIT OF ANYONE OTHER THAN ASHWORTH BROS., INC. NO RIGHT IS GRANTED TO DISCLOSE OR USE ANY INFORMATION SHOWN ON THIS DRAWING.

UNLESS OTHERWISE SPECIFIED, DIMENSIONS ARE IN INCHES (mm) VALUES ONLY. ACTUAL DIMENSIONS ARE AFFECTED BY MANUFACTURING SPECS. AND/OR PROCESS CONDITIONS. CONTACT ASHWORTH ENGINEERING FOR MORE DETAIL.		CONTRACT / PROJECT NO.	
THIRD ANGLE PROJECTION	CHECKED	DRAWN	DATE
MATERIAL	REF ASSEMBLY	DESIGN	1/11/22
TREATMENT	REF PART	APPROVALS	
FINISH	ASHWORTH PART NUMBER	NEC	

**Ashworth**  
490 ARMOUR DALE, WINCHESTER, VA 22601

**Ashworth Bros., Inc.**

ILLUSTRATION, SRPDG100,  
SMALL RADIUS POSI-DRIVE GRID 100,  
B36-12/12-17 MESH

SIZE	CAGE CODE	DWG. NO.	REV.
B	96664	SRPDG100-B36-12-12-17	A
SCALE	CALC./WT	SHEET	1 OF 1